

Triangular Wave Technologies TWT-5C8-470 Residential/Light Commercial Deposit Control System

Control Scale and Bio-fouling in all Hot Water Heaters

How the Triangular Wave Systems Control Scale, Lime and Biological Deposits.

Scale and biological deposits form when these elements "stick" to the surfaces of pipes, water heaters, plumbing fixtures and other equipment. The Triangular Wave Deposit Controller charges the particles in the water so that they cannot stick together or stick to any surfaces.

Simply Said...

The Triangular Wave Technologies Deposit Controller will give you the total effect of soft water without the negative consequences, and clear up the deposits you already have!

Breakthrough Technology Means...

- Provides the effects of softened water, neutralizes calcium hardness effects in the water
- Reduces onsite service calls
- Prevents scale & slime buildup on surfaces
- Uses no salts or other chemicals
- Service and **MAINTENANCE-FREE!**
- Improves efficiency of all water-fed appliances and extends their life
- Quickly pays for itself and continues saving
- Descales the entire system over time
- Designed for safety: The output is safe to both personnel and equipment. There is **NO ELECTRICAL CONTACT WITH THE PIPE**

All the benefits of SOFT WATER WITHOUT THE SALT!

- Reaction chamber compatible with all types of pipe/tube
- Requires no plumbing work, and can be installed by anyone
- Takes up minimal space and plugs into a standard 120 vac socket
- **90 DAY MONEY BACK GUARANTEE**
- **5 YEAR WARRANTY**
- Uses only \$10.00 to \$14.00 of electricity per year
- **STOPS LIME SCALE BUILD UP**

- **PREVENTS SCALE BUILD-UP**
- **CONTROLS SLIME DEPOSITS**
- **REDUCES CORROSION**
- **CONTROLS ALGAE AND BACTERIA**
- **MAINTAINS EFFICIENT HEAT TRANSFER**
- **EXTENDS LIFE OF HEATING ELEMENT**

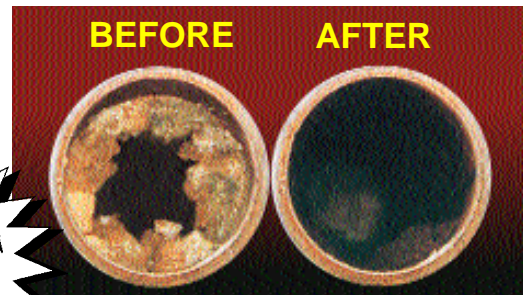
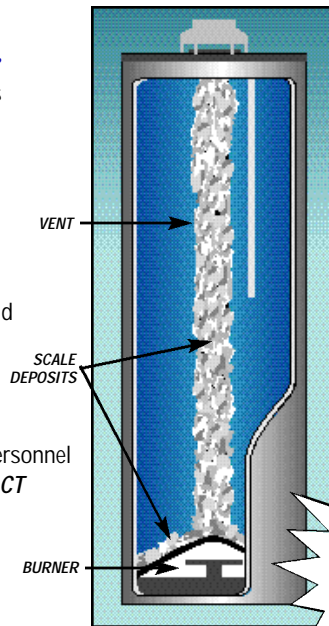
The Patented Triangular Wave Deposit Controller System

The *Triangular Wave Deposit Control System* is an advanced method for controlling scale and bio-fouling. The Patented *Triangular Wave System* includes a wire coil that forms a solenoid around the fluid pipe, and a power supply that **constantly changes the polarity, frequency and amplitude** of the current being sent to the solenoid. This forms an ever-changing electromagnetic field, which induces a constantly changing voltage that treats the particles in the water 100% of the time.

Hot water Heaters

The cut away view on the left is of a hot water heater estimated to be between 7 to 12 years old. The estimated cost for running a 40-gallon hot water heater is doubled when scale build-up of just 3/8" gobbles up 55 percent more energy.* Water heater efficiency is greatly reduced by hard water. Scale buildup reduces water flow and decreases heat transfer.

* According to the National Institute of Standards and Technology.



Eliminates deposits in pipes and heating elements

FIELD TESTED AND PROVEN EFFECTIVE



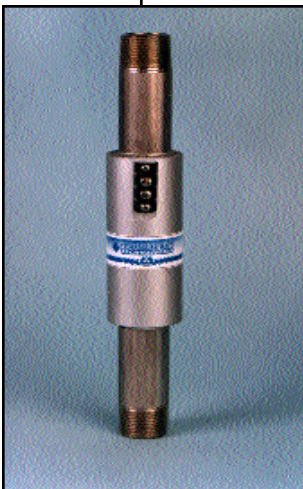
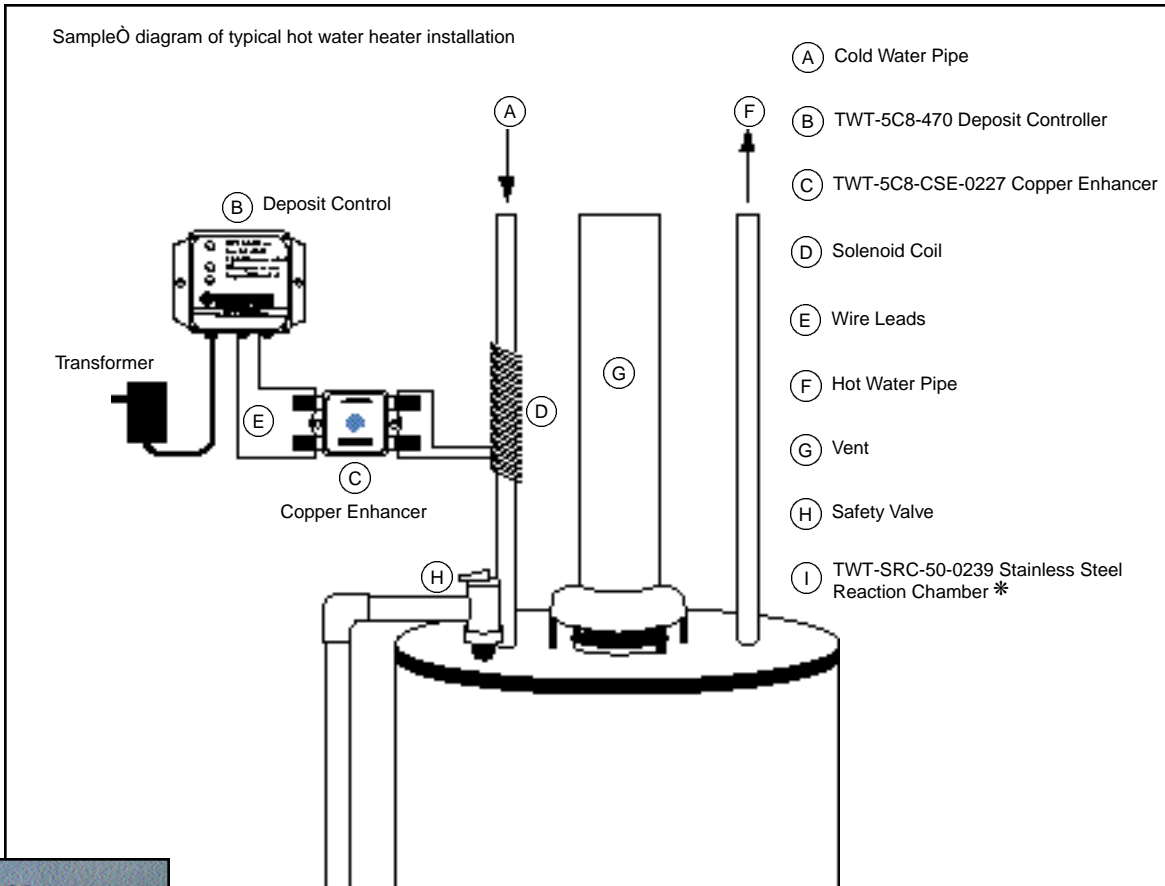
For pipes 1" or less
Larger sizes available upon request

REDUCES MAINTENANCE AND ON SITE SERVICE COSTS

CLEANER WATER IS HEALTHIER WATER!

TRIANGULAR WAVE TECHNOLOGIES, INC.
FLUID MANAGEMENT SOLUTIONS
www.triangularwave.com

Triangular Wave Technologies Deposit Control System Installation for Hot Water Heaters



* To use in conjunction with the TWT Deposit Control Systems when required, Triangular Wave Technologies, Inc. has developed a line of factory-wrapped wire coil Reaction Chambers to address magnetic pipe environments. Typically, wire coil cannot be installed on any magnetic pipe, such as **steel, and galvanized steel**. When the coil is applied to a magnetic material, the pipe becomes a shield and prevents the wave energy from entering the fluid path. The TWT Reaction Chambers provide an easily installed section of non-magnetic pipe to provide the proper pipe material for the Deposit Control System to work as designed.

The TWT Reaction Chambers are fully sealed, protecting their two layers of factory-wrapped coil. The Stainless Steel Reaction Chambers are designed and manufactured to meet the highest quality specifications.

1. Attach TWT-5C8-470 to wall near hot water heater
2. Attach TWT-5C8-CSE-0227 Copper Enhancer adjacent to Deposit Controller
3. Connect wire leads to Copper Signal Enhancer, then to Solenoid Coil wrapped pipe as illustrated
4. Plug transformer into a standard 120 VAC outlet